

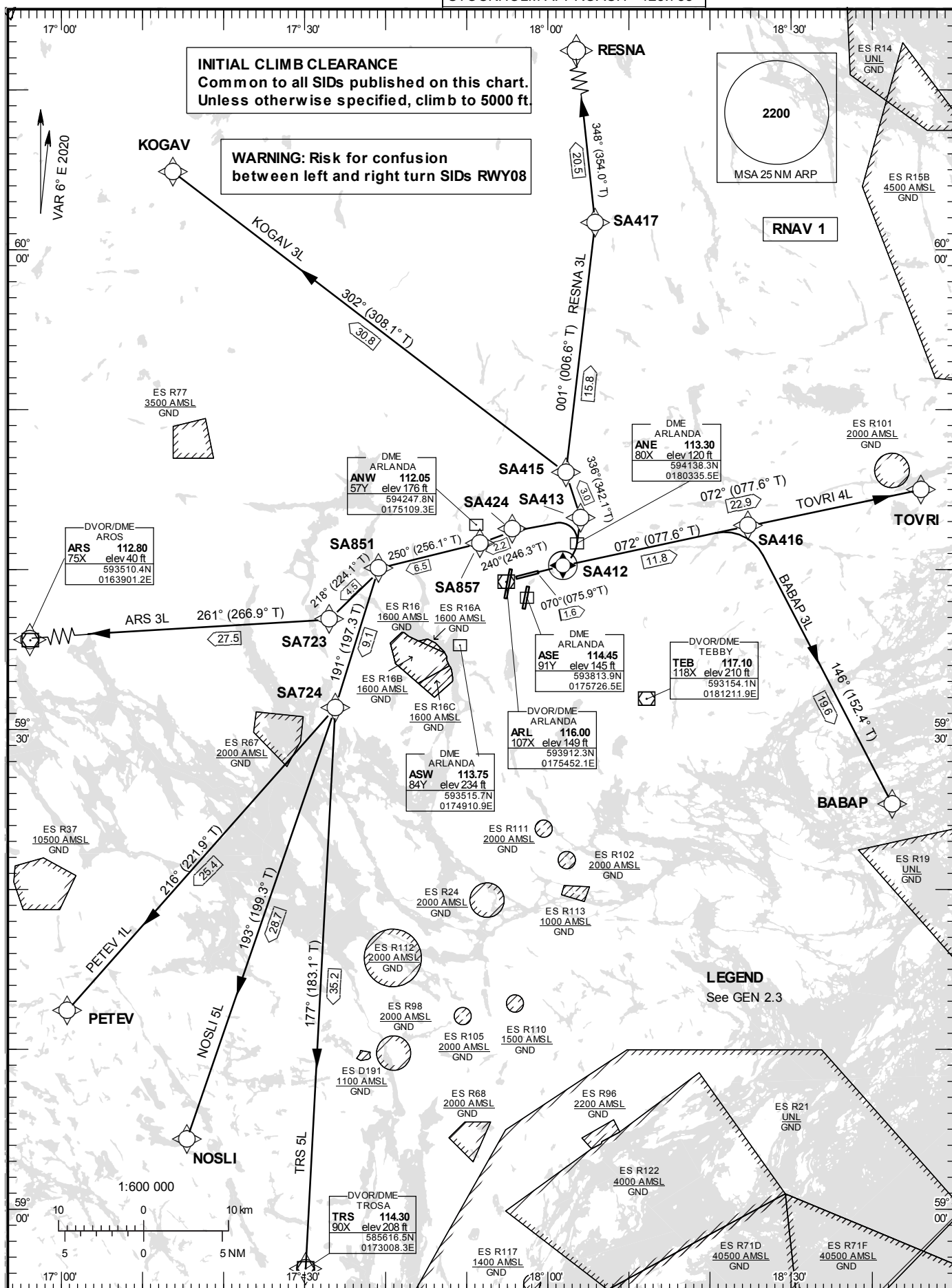
STOCKHOLM/Arlanda

RNAV (DME/DME or GNSS)
SID RWY 08 Left turn

STANDARD INSTRUMENT
DEPARTURE CHART (SID) -
ICAO

HGT and ALT in ft
BRG are MAG (True)
TA 5000 ft AMSL

ARLANDA TOWER	128.730
ARLANDA ATIS DEP	121.630
STOCKHOLM APPROACH	123.755



STOCKHOLM/Arlanda

Prescribed Coding of RNAV SID for RWY 08 Left turn

Notes:

INITIAL CLIMB CLEARANCE: Climb to 5000 ft unless otherwise specified. Common to all SIDs published on charts.

Aircraft proceeding on RNAV SID shall use 400 ft/NM (6.6%) as a minimum gradient of climb up to 5000 ft AMSL.
Aircraft unable to conform with this procedure shall inform ATC accordingly.

Aircraft from STOCKHOLM/Arlanda shall not be operated at an airspeed of more than 250 kt IAS below FL 100 unless otherwise instructed.

Contact Frequency: Contact STOCKHOLM DEPARTURE, when so instructed by TWR, on channel indicated below.

ARS 3L

Path Term	Waypoint Identifier	Fly-over	Course °M(°T)	Dist (NM)	Turn Dir	Rest Alts (ft AMSL)	Speed Limits (kt)	VPA/ RDH (°/ft)	Rec Navaid	Navigation Specification
CF	SA412	Y	070°(075.9°)	1.6	-	+600	-	-	ARL	RNAV 1
DF	SA424	-	-	-	L	+2500	-205	-	-	RNAV 1
TF	SA857	-	240°(246.3°)	2.2	-	-	-	-	-	RNAV 1
TF	SA851	-	250°(256.1°)	6.5	-	-	-	-	-	RNAV 1
TF	SA723	-	218°(224.1°)	4.5	-	-	-	-	-	RNAV 1
TF	ARS	-	261°(266.9°)	27.5	-	-	-	-	-	RNAV 1

SID instruction:

Climb on track 070° to SA412 (MIN 600 ft before turn) – SA424 (MIN 2500 ft and MAX 205 kt IAS until SA424) – SA857 – SA851 – SA723 – ARS

124.105 MHz

ACFT unable to follow RNAV SID:

Report "unable RNAV SID due to RNAV type" to Clearance Delivery and "unable RNAV SID" to Stockholm Departure at first contact.
Climb on track 070° to ARL DME 3.7 (MIN 600 ft before turn). Turn Left to track 360° (MAX 205 kt IAS until established on track 360°). Expect radar vectors to ARS.

BABAP 3L

Path Term	Waypoint Identifier	Fly-over	Course °M(°T)	Dist (NM)	Turn Dir	Rest Alts (ft AMSL)	Speed Limits (kt)	VPA/ RDH (°/ft)	Rec Navaid	Navigation Specification
CF	SA412	Y	070°(075.9°)	1.6	-	+600	-	-	ARL	RNAV 1
TF	SA416	-	072°(077.6°)	11.8	-	-	-	-	-	RNAV 1
TF	BABAP	-	146°(152.4°)	19.6	R	-	-	-	-	RNAV 1

SID instruction:

Climb on track 070° to SA412 – SA416 – BABAP

130.330 MHz

ACFT unable to follow RNAV SID:

Report "unable RNAV SID due to RNAV type" to Clearance Delivery and "unable RNAV SID" to Stockholm Departure at first contact.
Climb on track 070° to ARL DME 3.7. Expect radar vectors to BABAP.

STOCKHOLM/Arlanda**KOGAV 3L**

Path Term	Waypoint Identifier	Fly-over	Course °M(°T)	Dist (NM)	Turn Dir	Rest Alts (ft AMSL)	Speed Limits (kt)	VPA/ RDH (°/ft)	Rec Navaid	Navigation Specification
CF	SA412	Y	070°(075.9°)	1.6	-	+600	-	-	ARL	RNAV 1
DF	SA413	-			L	+1500	-210	-	-	RNAV 1
TF	SA415	-	336°(342.1°)	3.0	-	-	-	-	-	RNAV 1
TF	KOGAV	-	302°(308.1°)	30.8	L	-	-	-	-	RNAV 1

SID instruction: Climb on track 070° to SA412 (MIN 600 ft before turn) – SA413 (MAX 210 kt IAS until SA413) – SA415 – KOGAV

124.105 MHz

ACFT unable to follow RNAV SID: Report "unable RNAV SID due to RNAV type" to Clearance Delivery and "unable RNAV SID" to Stockholm Departure at first contact.
Climb on track 070° to ARL DME 3.7 (MIN 600 ft before turn). Turn Left to track 360° (MAX 210 kt IAS until established on track 360°). Expect radar vectors to KOGAV.

NOSLI 5L

Path Term	Waypoint Identifier	Fly-over	Course °M(°T)	Dist (NM)	Turn Dir	Rest Alts (ft AMSL)	Speed Limits (kt)	VPA/ RDH (°/ft)	Rec Navaid	Navigation Specification
CF	SA412	Y	070°(075.9°)	1.6	-	+600	-	-	ARL	RNAV 1
DF	SA424	-	-	-	L	+2500	-205	-	-	RNAV 1
TF	SA857	-	240°(246.3°)	2.2	-	-	-	-	-	RNAV 1
TF	SA851	-	250°(256.1°)	6.5	-	-	-	-	-	RNAV 1
TF	SA724	-	191°(197.3°)	9.1	L	-	-	-	-	RNAV 1
TF	NOSLI	-	193°(199.3°)	28.7	-	-	-	-	-	RNAV 1

SID instruction: Climb on track 070° to SA412 (MIN 600 ft before turn) – SA424 (MIN 2500 ft and MAX 205 kt IAS until SA424) – SA857 – SA851 – SA724 – NOSLI

124.105 MHz

ACFT unable to follow RNAV SID: Report "unable RNAV SID due to RNAV type" to Clearance Delivery and "unable RNAV SID" to Stockholm Departure at first contact.
Climb on track 070° to ARL DME 3.7 (MIN 600 ft before turn). Turn Left to track 360° (MAX 205 kt IAS until established on track 360°). Expect radar vectors to NOSLI.

PETEV 1L

Path Term	Waypoint Identifier	Fly-over	Course °M(°T)	Dist (NM)	Turn Dir	Rest Alts (ft AMSL)	Speed Limits (kt)	VPA/ RDH (°/ft)	Rec Navaid	Navigation Specification
CF	SA412	Y	070°(075.9°)	1.6	-	+600	-	-	ARL	RNAV 1
DF	SA424	-	-	-	L	+2500	-205	-	-	RNAV 1
TF	SA857	-	240°(246.3°)	2.2	-	-	-	-	-	RNAV 1
TF	SA851	-	250°(256.1°)	6.5	-	-	-	-	-	RNAV 1
TF	SA724	-	191°(197.3°)	9.1	L	-	-	-	-	RNAV 1
TF	PETEV	-	216°(221.9°)	25.4	-	-	-	-	-	RNAV 1

SID instruction: Climb on track 070° to SA412 (MIN 600 ft before turn) – SA424 (MIN 2500 ft and MAX 205 kt IAS until SA424) – SA857 – SA851 – SA724 – PETEV

124.105 MHz

ACFT unable to follow RNAV SID: Report "unable RNAV SID due to RNAV type" to Clearance Delivery and "unable RNAV SID" to Stockholm Departure at first contact.
Climb on track 070° to ARL DME 3.7 (MIN 600 ft before turn). Turn Left to track 360° (MAX 205 kt IAS until established on track 360°). Expect radar vectors to PETEV.

STOCKHOLM/Arlanda**RESNA 3L**

Path Term	Waypoint Identifier	Fly-over	Course °M(°T)	Dist (NM)	Turn Dir	Rest Alts (ft AMSL)	Speed Limits (kt)	VPA/ RDH (°/ft)	Rec Navaid	Navigation Specification
CF	SA412	Y	070°(075.9°)	1.6	-	+600	-	-	ARL	RNAV 1
DF	SA413	-			L	+1500	-210	-	-	RNAV 1
TF	SA415	-	336°(342.1°)	3.0	-	-	-	-	-	RNAV 1
TF	SA417	-	001°(006.6°)	15.8	-	-	-	-	-	RNAV 1
TF	RESNA	-	348°(354.0°)	20.5	-	-	-	-	-	RNAV 1

SID instruction: Climb on track 070° to SA412 (MIN 600 ft before turn) – SA413 (MAX 210 kt IAS until SA413) – SA415 – SA417 – RESNA **124.105 MHz**

ACFT unable to follow RNAV SID: Report "unable RNAV SID due to RNAV type" to Clearance Delivery and "unable RNAV SID" to Stockholm Departure at first contact.
Climb on track 070° to ARL DME 3.7 (MIN 600 ft before turn). Turn Left to track 360° (MAX 210 kt IAS until established on track 360°). Expect radar vectors to RESNA.

TOVRI 4L

Path Term	Waypoint Identifier	Fly-over	Course °M(°T)	Dist (NM)	Turn Dir	Rest Alts (ft AMSL)	Speed Limits (kt)	VPA/ RDH (°/ft)	Rec Navaid	Navigation Specification
CF	SA412	Y	070°(075.9°)	1.6	-	+600	-	-	ARL	RNAV 1
TF	TOVRI	-	072°(077.6°)	22.9	-	-	-	-	-	RNAV 1

SID instruction: Climb on track 070° to SA412 – TOVRI **130.330 MHz**

ACFT unable to follow RNAV SID: Report "unable RNAV SID due to RNAV type" to Clearance Delivery and "unable RNAV SID" to Stockholm Departure at first contact.
Climb on track 070° to ARL DME 3.7. Expect radar vectors to TOVRI.

TRS 5L

Path Term	Waypoint Identifier	Fly-over	Course °M(°T)	Dist (NM)	Turn Dir	Rest Alts (ft AMSL)	Speed Limits (kt)	VPA/ RDH (°/ft)	Rec Navaid	Navigation Specification
CF	SA412	Y	070°(075.9°)	1.6	-	+600	-	-	ARL	RNAV 1
DF	SA424	-	-	-	L	+2500	-205	-	-	RNAV 1
TF	SA857	-	240°(246.3°)	2.2	-	-	-	-	-	RNAV 1
TF	SA851	-	250°(256.1°)	6.5	-	-	-	-	-	RNAV 1
TF	SA724	-	191°(197.3°)	9.1	L	-	-	-	-	RNAV 1
TF	TRS	-	177°(183.1°)	35.2	-	-	-	-	-	RNAV 1

SID instruction: Climb on track 070° to SA412 (MIN 600 ft before turn) – SA424 (MIN 2500 ft and MAX 205 kt IAS until SA424) – SA857 – SA851 – SA724 – TRS **124.105 MHz**

ACFT unable to follow RNAV SID: Report "unable RNAV SID due to RNAV type" to Clearance Delivery and "unable RNAV SID" to Stockholm Departure at first contact.
Climb on track 070° to ARL DME 3.7 (MIN 600 ft before turn). Turn Left to track 360° (MAX 205 kt IAS until established on track 360°). Expect radar vectors to TRS.